

C O A S T L I N E

LANDSCAPE / SEASCAPE / TRANSITIONS

Milliken™

COASTLINE

Where the land meets the sea to offer a natural boundary and beautiful breathing space. An area of rugged resilience and uncompromising beauty.

Remote depths of maritime colour and rich, rippling textures appear as the rugged shoreline meets the splendour of the coastal cliffs and a new journey begins.



LND163-37-13 Natterjack
LNT163-37-13/153-118 Natterjack/Rockpool
LND153-118 Rockpool



SEA13-203 Marram
SEA215-153 Lighthouse
SET215-153/13-203 Lighthouse/Marram
SEA13-203 Marram



LND153-15 Crush
LNT153-15/04-53-230 Crush/Samphire
LND04-53-230 Samphire

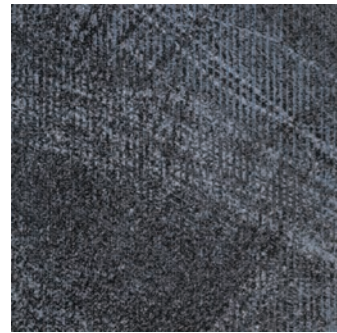


LND153-144 Pampas Grass

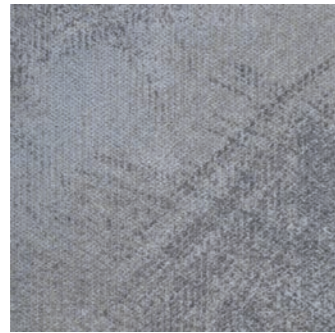


LND153-144 Pampas Grass

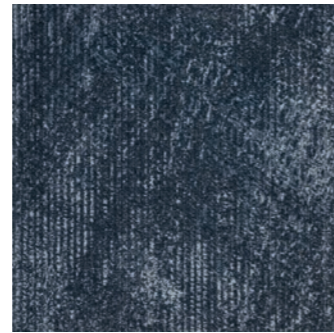
COASTLINE / LANDSCAPE



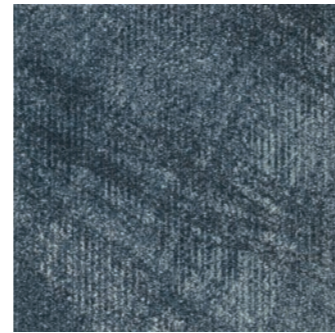
LND13-118-138 Clover



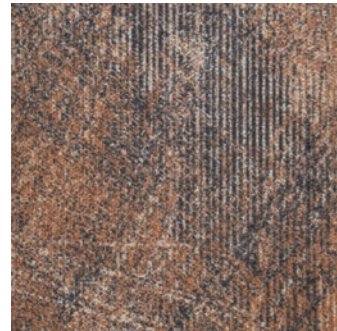
LND13-180-250 Cliff



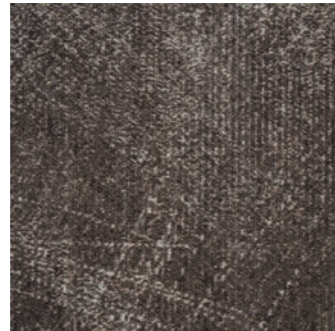
LND118-13 Atlantic



LND245-73 Bay



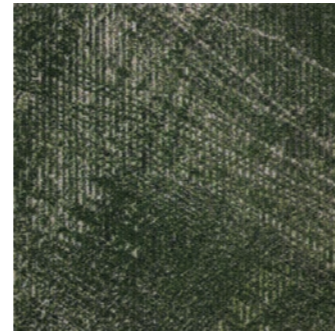
LND13-216 Urchin



LND04-59-120 Driftwood



LND04-53-230 Samphire



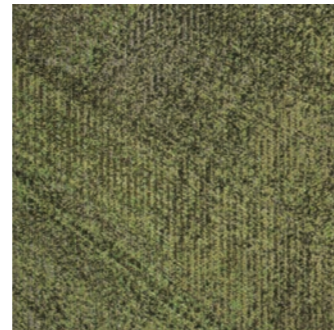
LND13-203 Marram



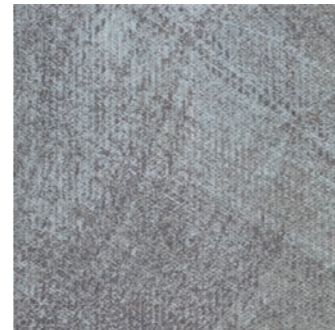
LND65-15-96 Shore



LND217-48-153 Reef



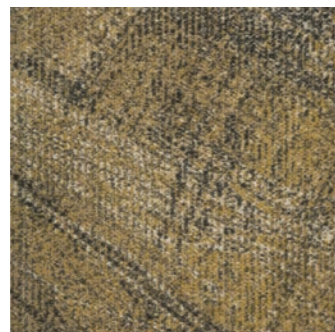
LND103-62 Kelp



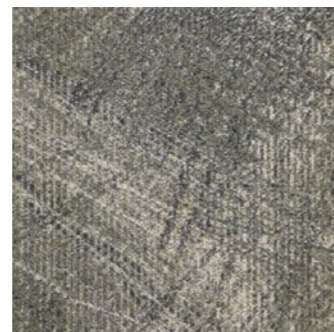
LND171-139-153 Salt



LND153-15 Crush



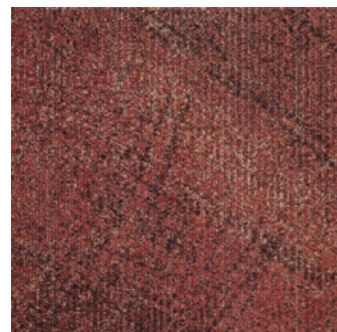
LND69-231 Grain



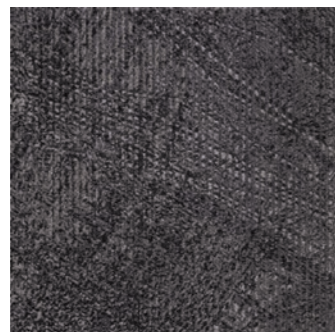
LND163-37-13 Natterjack



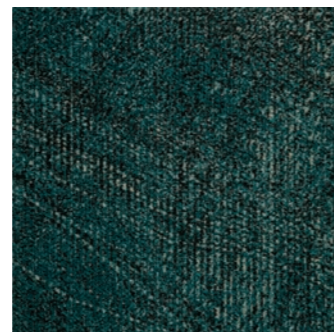
LND73-240 Shoal



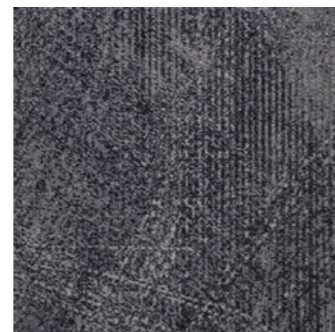
LND121-133-60 Hermit



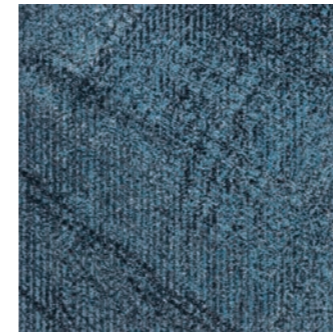
LND133-118-13 Grey Seal



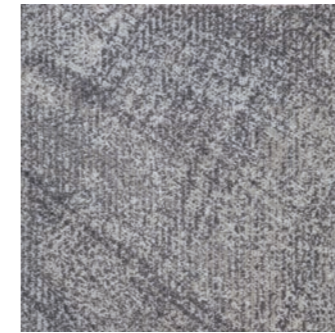
LND118-125 Maritime



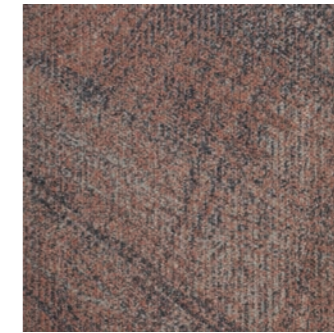
LND153-118 Rockpool



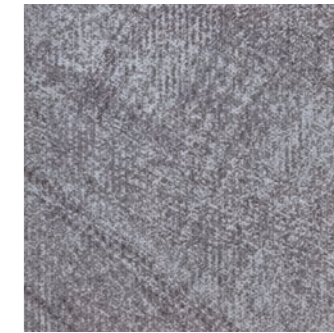
LND13-159-19 Tidal



LND153-144 Pampas Grass



LND261-13 Scallop

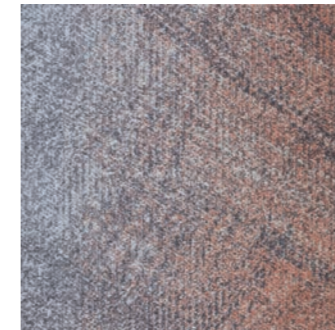


LND118-153 Lighthouse

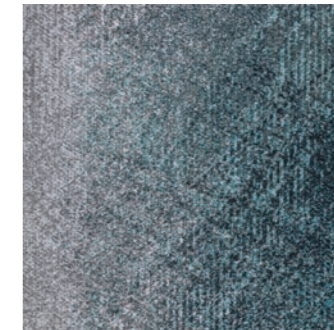
TRANSITIONS



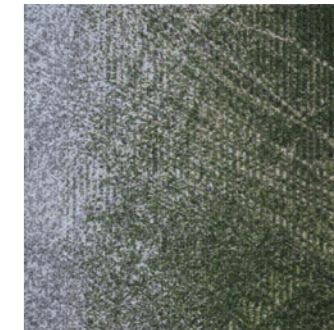
Lighthouse/Urchin
LNT118-153/13-216



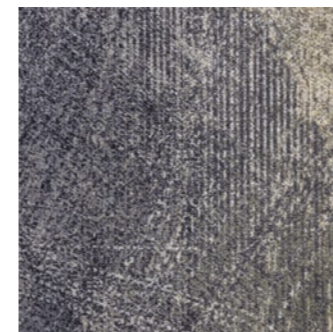
Lighthouse/Scallop
LNT118-153/261-13



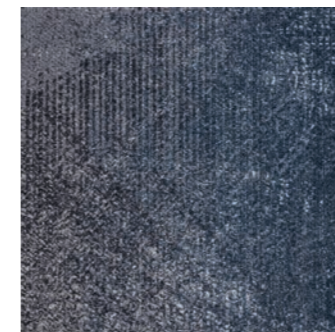
Lighthouse/Tidal
LNT118-153/13-159-19



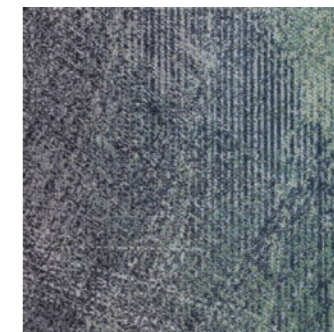
Lighthouse/Marram
LNT118-153/13-203



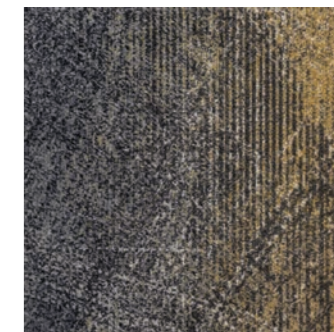
Rockpool/Natterjack
LNT153-118/163-37-13



Rockpool/Atlantic
LNT153-118/18-13



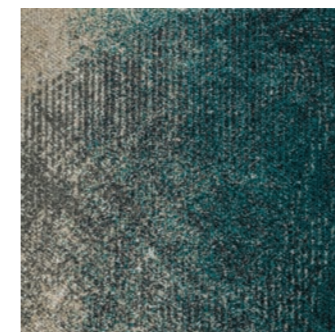
Rockpool/Shoal
LNT153-118/73-240



Rockpool/Grain
LNT153-118/69-231



Crush/Hermit
LNT153-15/121-133-60



Crush/Maritime
LNT153-15/118-125



Crush/Driftwood
LNT153-15/04-59-120



Crush/Samphire
LNT153-15/04-53-230

Tiles shown in left/right transitions.
Also available in right/left versions.

Les images ci-dessus montrent les transitions de couleurs
de gauche à droite sur la dalle. Toutes les couleurs sont
aussi disponibles en transitions de droite à gauche.

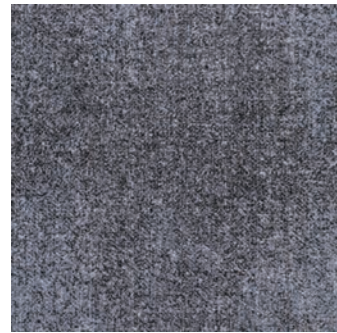
Die Abbildungen oben zeigen Farbübergänge von links
nach rechts. Alle Farben sind auch mit Farbübergängen
von rechts nach links erhältlich.

Las losetas de esta página muestran transiciones de
izquierda a derecha. Todos los colores están también
disponibles en transiciones de derecha a izquierda.

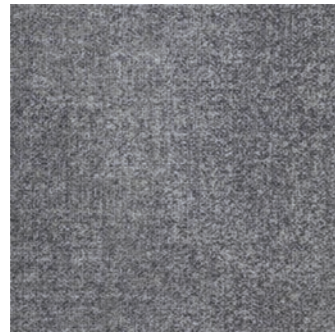


SEA05-15 Crush
SET05-15/118-125 Crush/Maritime
SEA118-125 Maritime
SET118-125/05-15 Maritime/Crush
SEA05-15 Crush

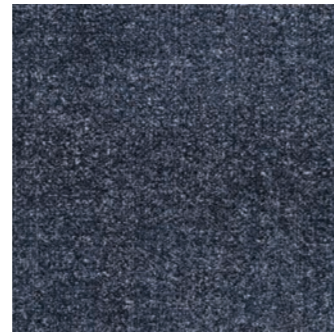
COASTLINE / SEASCAPE



SEA118-138 Clover



SEA13-250 Cliff



SEA118-13 Atlantic



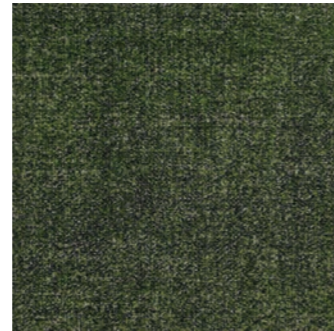
SEA245-73 Bay



SEA153-216 Urchin



SEA59-120 Driftwood



SEA53-230 Samphire



SEA13-203 Marram



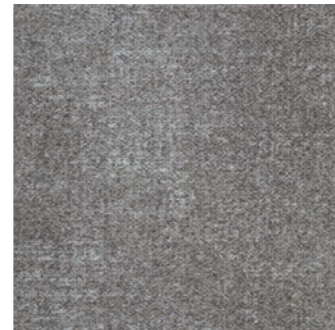
SEA96-65 Shore



SEA173-48 Reef



SEA103-62 Kelp



SEA139-171 Salt



SEA05-15 Crush



SEA69-231 Grain



SEA163-152 Natterjack



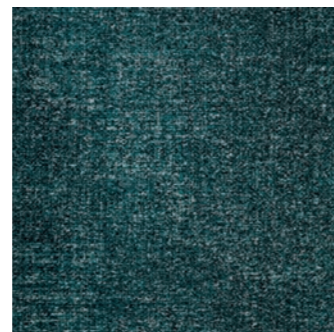
SEA73-240 Shoal



SEA133-60 Hermit



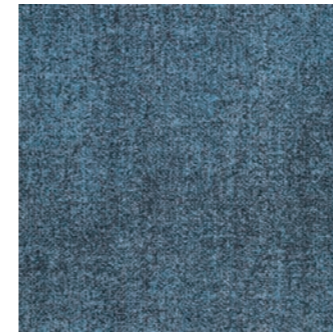
SEA133-13 Grey Seal



SEA118-125 Maritime



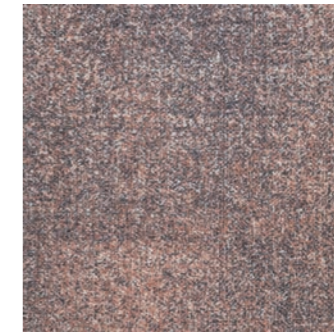
SEA154-153 Rockpool



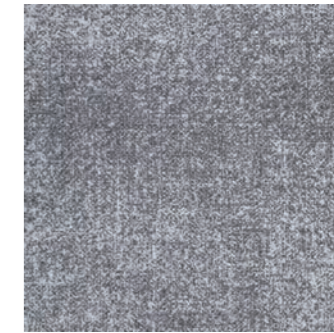
SEA13-159 Tidal



SEA153-144 Pampas Grass



SEA153-261 Scallop



SEA215-153 Lighthouse

TRANSITIONS



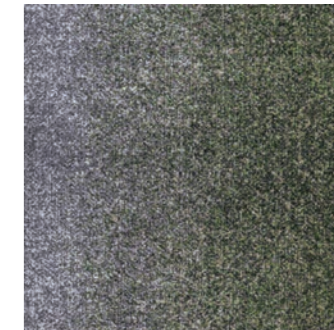
Lighthouse/Urchin
SET215-153/153-216



Lighthouse/Scallop
SET215-153/153-261



Lighthouse/Tidal
SET215-153/13-159



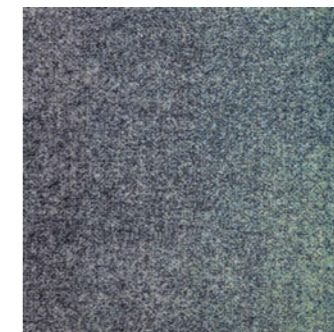
Lighthouse/Marram
SET215-153/13-203



Rockpool/Natterjack
SET154-153/163-152



Rockpool/Atlantic
SET154-153/118-13



Rockpool/Shoal
SET154-153/73-240



Rockpool/Grain
SET154-153/69-231



Crush/Hermit
SET05-15/133-60



Crush/Maritime
SET05-15/118-125



Crush/Driftwood
SET05-15/59-120



Crush/Samphire
SET05-15/53-230

Tiles shown in left/right transitions.
Also available in right/left versions.

Les images ci-dessus montrent les transitions de couleurs
de gauche à droite sur la dalle. Toutes les couleurs sont
aussi disponibles en transitions de droite à gauche.

Die Abbildungen oben zeigen Farbübergänge von links
nach rechts. Alle Farben sind auch mit Farbübergängen
von rechts nach links erhältlich.

Las losetas de esta página muestran transiciones de
izquierda a derecha. Todos los colores están también
disponibles en transiciones de derecha a izquierda.



TECHNICAL INFORMATION

INFORMATIONS TECHNIQUES / TECHNISCHE ANGABEN / INFORMACIÓN TÉCNICA



SPECIFICATION



SPÉCIFICATION



DATENBLATT



ESPECIFICACIONES
TÉCNICAS



VISUALISE ONLINE



VISUALISER EN LIGNE



ONLINE VISUALISIEREN



VISUALIZAR ONLINE



INTERACTIVE BROCHURE



BROCHURE INTERACTIVE



INTERAKTIVE BROSCHÜRE



FOLLETO INTERACTIVO

M/PACT™
CARBON NEUTRAL PROGRAMME

Our flooring products are
carbon neutral everywhere
in the world. Today.



Scan to learn more about our
carbon neutral programme
www.millikenfloors.com/gb/mpact

Aujourd'hui, nos moquettes,
nos produits LVT et nos
revêtements pour entrées
sont neutres en carbone,
partout dans le monde.



Scanner pour plus d'infos sur notre
programme de neutralité carbone
www.millikenfloors.com/fr/mpact

Unsere Teppich-, LVT- und
Eingangsbodenmodule sind
jetzt weltweit CO₂-neutral.



Hier scannen und mehr über unser
CO₂-neutrales programm erfahren
www.millikenfloors.com/de/mpact

En la actualidad todas
nuestras losetas de moqueta,
LVT y suelos de entradas
son carbono neutro en todo
el mundo.



Escanee aquí para obtener más información
sobre nuestro programa carbono neutro
www.millikenfloors.com/es/mpact

SEA73-240 Shoal
SET73-240/154-153 Shoal/Rockpool
SEA154-153 Rockpool
SET154-153/73-240 Rockpool/Shoal



Our London
showroom is
WELL Platinum
Certified

CUSTOMER SERVICE

SERVICE CLIENT / KUNDENSERVICE-
CENTER / SERVICIO AL CLIENTE

UK

T. +44 (0)1942 612 777
E. carpetenquiries@milliken.com

FRANCE

T. 08 05 54 27 77
E. demandesmoquettes@milliken.com

DEUTSCHLAND

T. 0800 7243794
E. verkauf@milliken.com

ESPAÑA

T. +44 (0)1942 612 777
E. informaciondemoqueta@milliken.com

SHOWROOMS**LONDON**

T. +44 (0)20 7336 7290

5 Berry Street,
Clerkenwell,
London EC1V 0AA

PARIS

T. +33 (0)1 40 98 06 99

40 Rue Des Mathurins,
75008 Paris

EUROPEAN HEAD OFFICE

SIÈGE EUROPÉEN / EUROPAZENTRALE /
SEDE CORPORATIVA EUROPA

T. +44 (0)1942 826 073

Beech Hill Plant,
Gidlow Lane,
Wigan WN6 8RN

Cover image

iStock: 1282765424,
Nirran
White sand beach
and dune grassland

Version 1

Issued February 2022
Publiée février 2022
Ausgabe Februar 2022
Expedida febrero 2022

www.millikenfloors.com

Milliken™