



**DOWN TO EARTH**

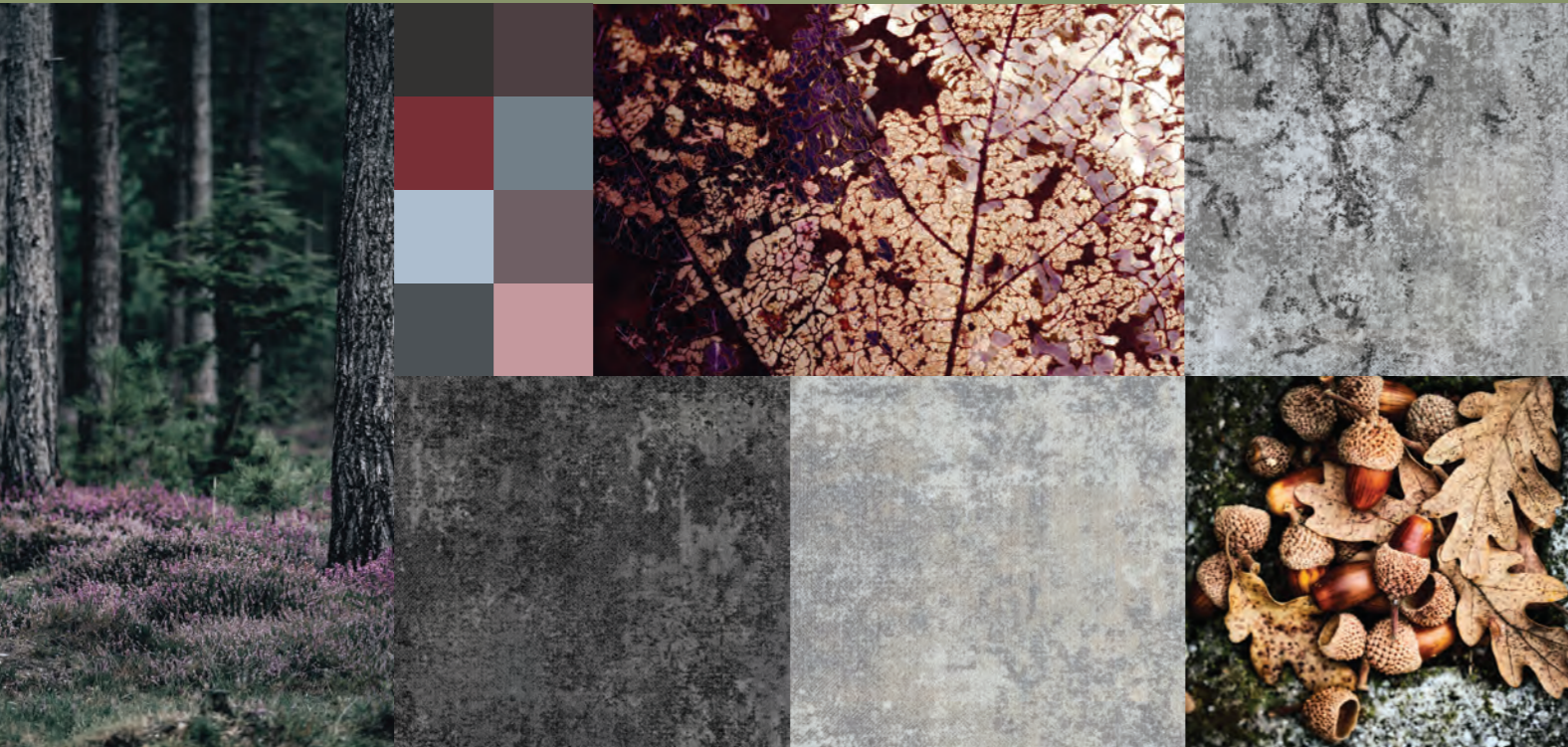
Grounded / Leaf / Twig

Milliken™



DOWN TO EARTH

Contrasting yet harmonious colours and intricately layered patterns engage our senses. Earthy hues range from muted to vivid to create a sense of calm and tranquility just when we need it most. Well-being, comfort and beauty combine to offer a refuge from the wider world and the perfect place to thrive and flourish.





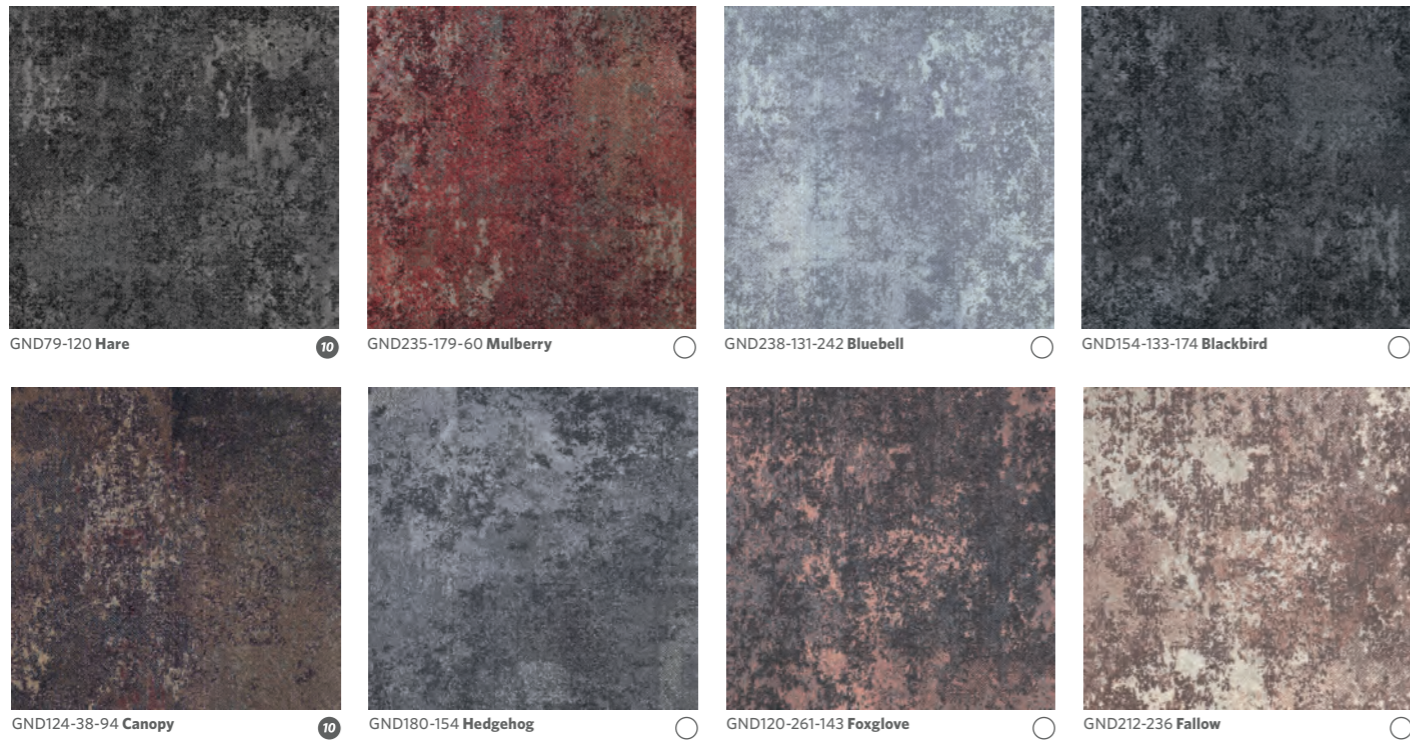


Grounded  
GND235-19 Copse  
GND120-261-143 Foxglove  
GND212-236 Fallow

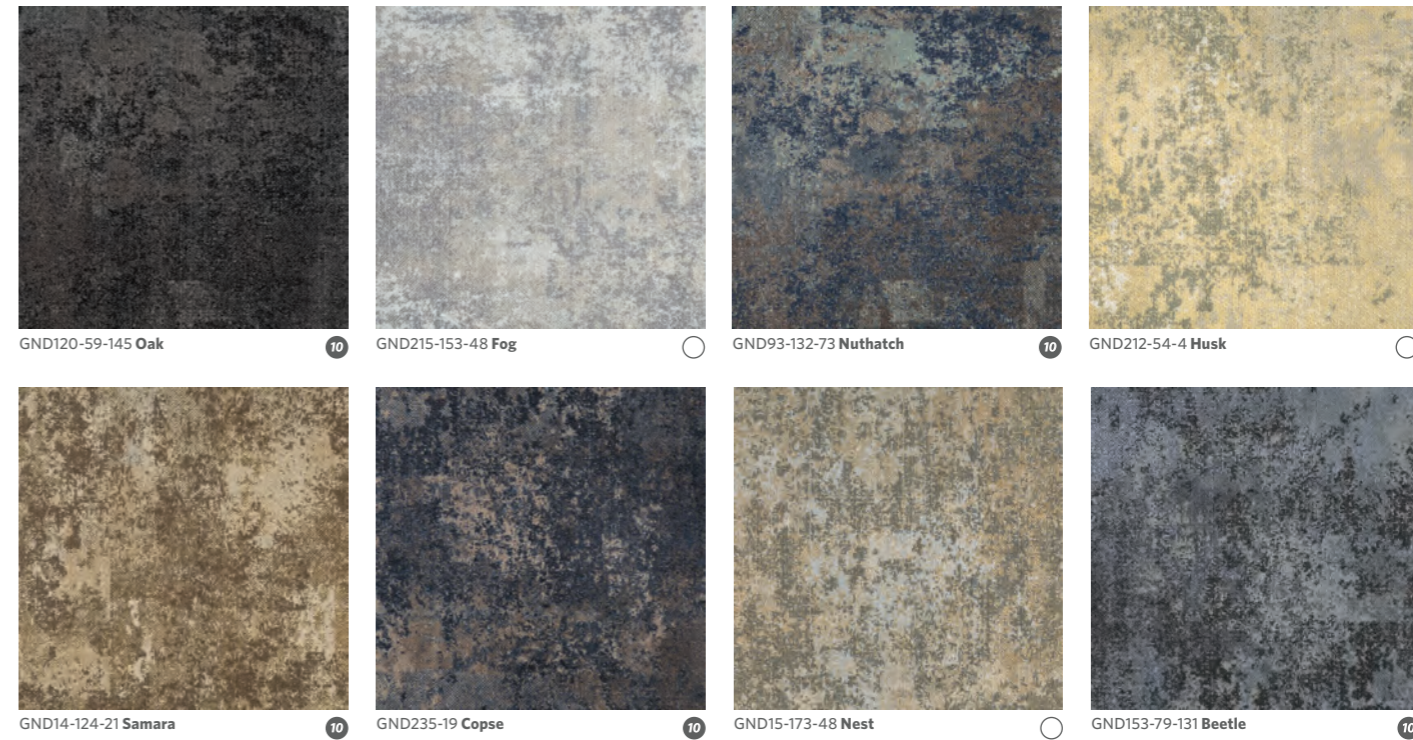




# Flourish



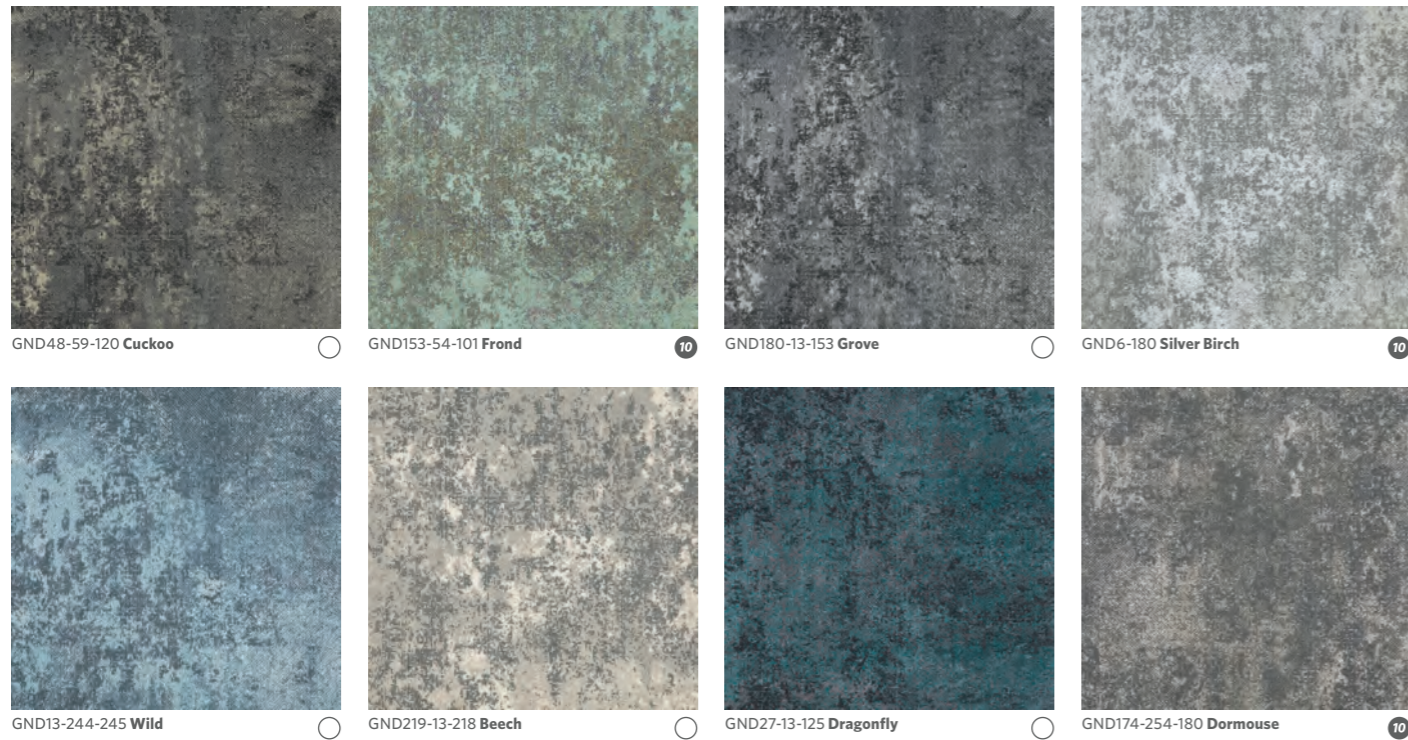
# Thrive







# Calming



# Comforting











Grounded GND6-180 Silver Birch



Grounded GND79-120 Hare



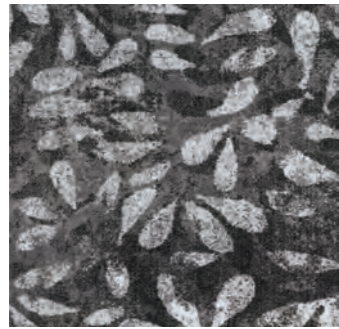


Grounded  
GND254-251 Tawny  
GND41-87-54 Hop  
GND94-28 Bracken

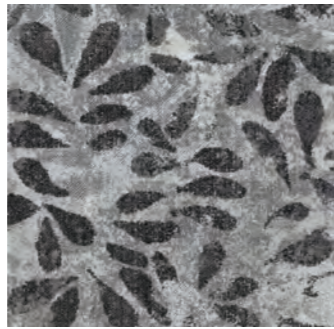


Grounded GND254-251 Tawny

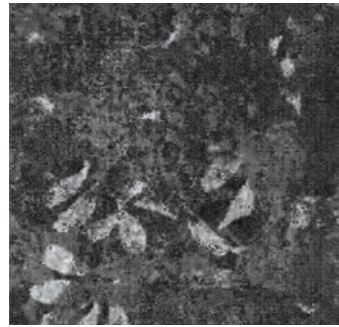




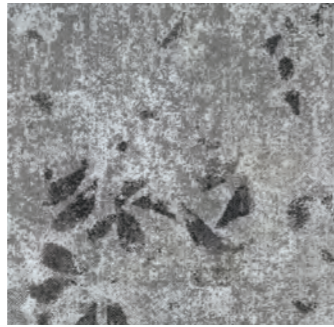
LFC79-120/6-180 Hare/Silver Birch 10



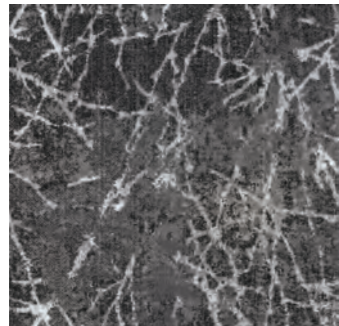
LFC6-180/79-120 Silver Birch/Hare 10



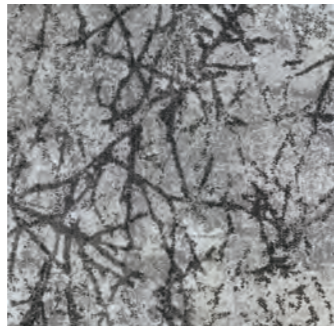
LFS79-120/6-180 Hare/Silver Birch 10



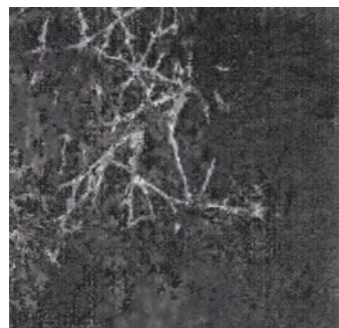
LFS6-180/79-120 Silver Birch/Hare 10



TCL79-120/6-180 Hare/Silver Birch 10



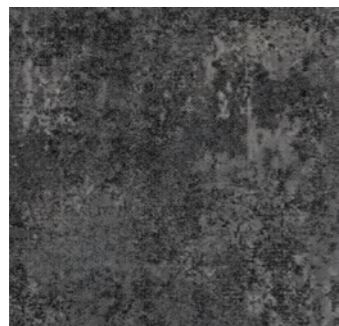
TCL6-180/79-120 Silver Birch/Hare 10



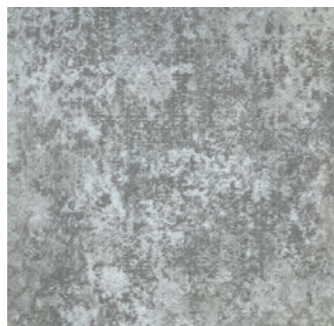
TSC79-120/6-180 Hare/Silver Birch 10



TSC6-180/79-120 Silver Birch/Hare 10

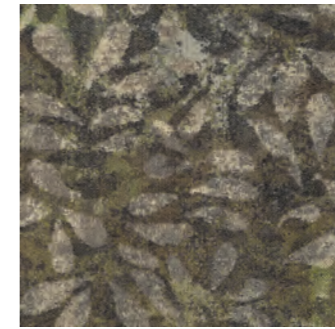


GND79-120 Hare 10

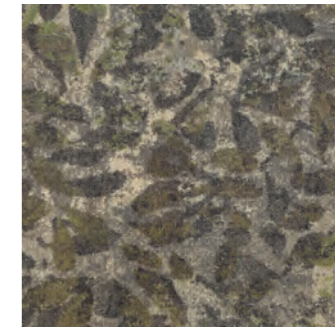


GND6-180 Silver Birch 10

Grounded



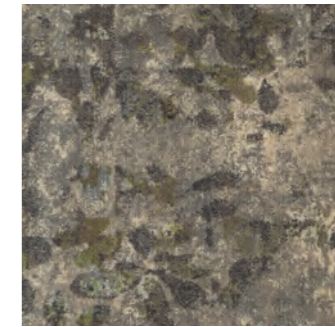
LFC94-28/254-251 Bracken/Tawny



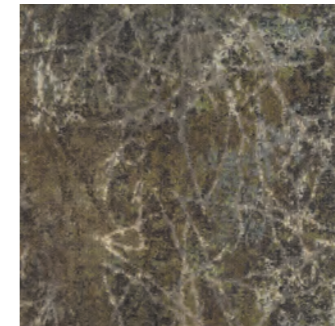
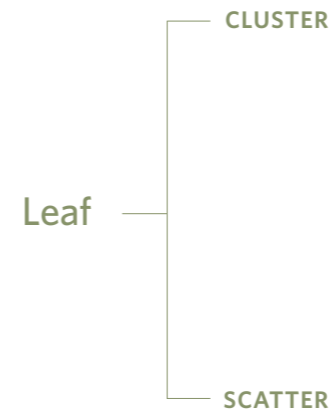
LFC254-251/94-28 Tawny/Bracken



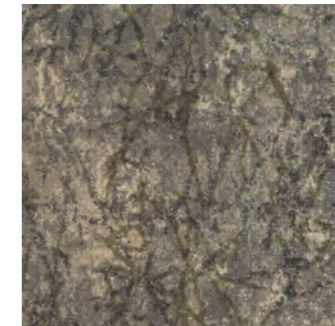
LFS94-28/254-251 Bracken/Tawny



LFS254-251/94-28 Tawny/Bracken



TCL94-28/254-251 Bracken/Tawny



TCL254-251/94-28 Tawny/Bracken



TSC94-28/254-251 Bracken/Tawny



TSC254-251/94-28 Tawny/Bracken



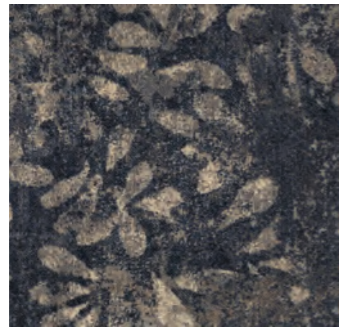
GND94-28 Bracken



GND254-251 Tawny 10

Grounded

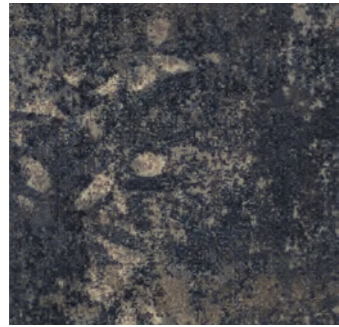




LFC235-19/254-251 Copse/Tawny 10



LFC254-251/235-19 Tawny/Copse 10



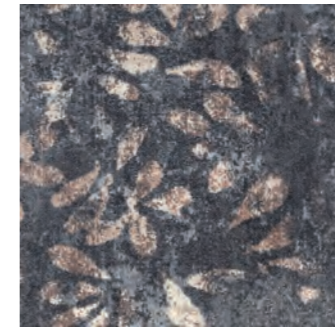
LFS235-19/254-251 Copse/Tawny 10



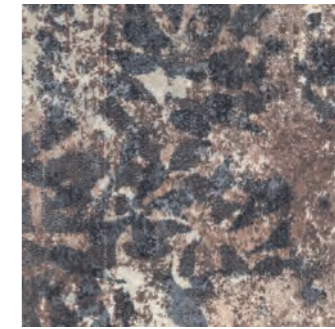
LFS254-251/235-19 Tawny/Copse 10

CLUSTER  
Leaf

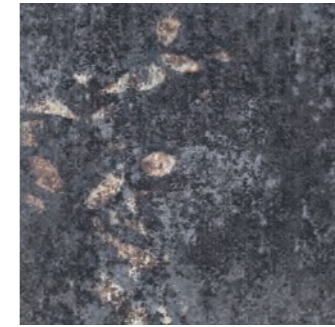
SCATTER



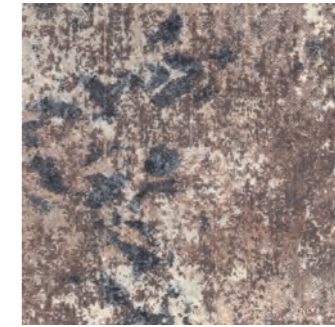
LFC180-154/212-236 Hedgehog/Fallow



LFC212-236/180-154 Fallow/Hedgehog



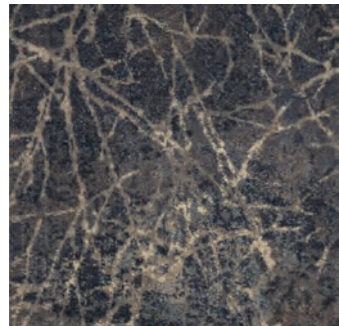
LFS180-154/212-236 Hedgehog/Fallow



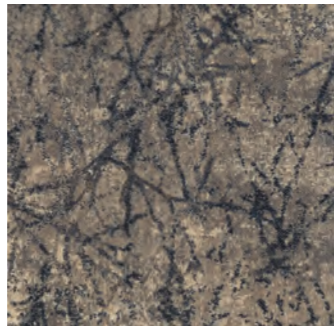
LFS212-236/180-154 Fallow/Hedgehog

CLUSTER  
Leaf

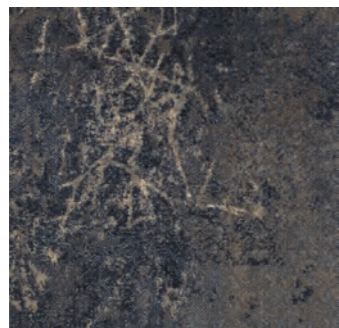
SCATTER



TCL235-19/254-251 Copse/Tawny 10



TCL254-251/235-19 Tawny/Copse 10



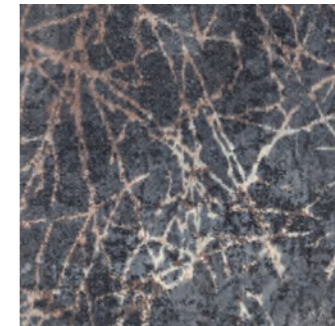
TSC235-19/254-251 Copse/Tawny 10



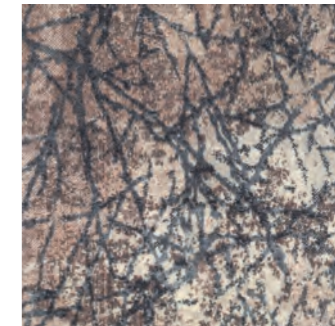
TSC254-251/235-19 Tawny/Copse 10

CLUSTER  
Twig

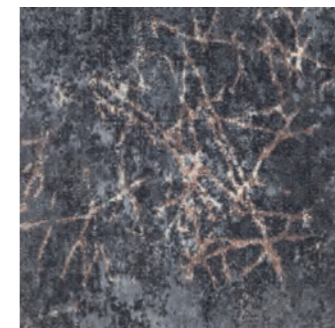
SCATTER



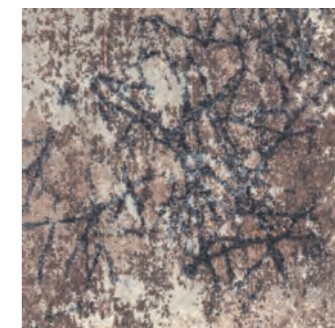
TCL180-154/212-236 Hedgehog/Fallow



TCL212-236/180-154 Fallow/Hedgehog



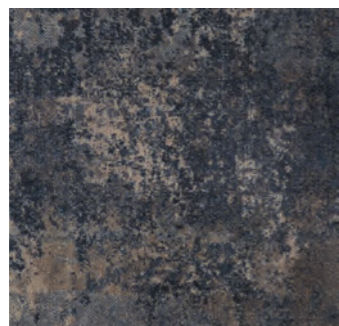
TSC180-154/212-236 Hedgehog/Fallow



TSC212-236/180-154 Fallow/Hedgehog

CLUSTER  
Twig

SCATTER



GND235-19 Copse 10



GND254-251 Tawny 10

Grounded



GND180-154 Hedgehog



GND212-236 Fallow

Grounded





LFS6-180/79-120 Silver Birch/Hare

LEAF / SCATTER



TSC6-180/79-120 Silver Birch/Hare

TWIG / SCATTER

LEAF / CLUSTER

TWIG / CLUSTER



LFC6-180/79-120 Silver Birch/Hare



TCL6-180/79-120 Silver Birch/Hare



Grounded / Leaf

36 tile layout / Calepinage 36 dalles / 36 Fliesen-Layout / plano de 36 losetas



- GROUNDDED Hedgehog
- LEAF / SCATTER Hedgehog / Fallow
- LEAF / CLUSTER Fallow / Hedgehog
- LEAF / CLUSTER Hedgehog / Fallow
- LEAF / SCATTER Hedgehog / Fallow
- GROUNDDED Fallow
- LEAF / CLUSTER Fallow / Hedgehog
- LEAF / SCATTER Fallow / Hedgehog
- GROUNDDED Fallow
- LEAF / CLUSTER Fallow / Hedgehog

Hedgehog Fallow



- LEAF / CLUSTER Fallow / Hedgehog
- GROUNDDED Fallow
- GROUNDDED Fallow
- LEAF / SCATTER Fallow / Hedgehog
- LEAF / CLUSTER Fallow / Hedgehog
- GROUNDDED Fallow
- LEAF / SCATTER Fallow / Hedgehog
- LEAF / CLUSTER Fallow / Hedgehog
- GROUNDDED Fallow
- LEAF / CLUSTER Fallow / Hedgehog

Grounded / Twig

36 tile layout / Calepinage 36 dalles / 36 Fliesen-Layout / plano de 36 losetas



- TWIG / CLUSTER Copse / Tawny
- TWIG / SCATTER Copse / Tawny
- GROUNDDED Copse
- GROUNDDED Copse
- TWIG / SCATTER Copse / Tawny
- TWIG / CLUSTER Copse / Tawny
- TWIG / CLUSTER Copse / Tawny
- TWIG / SCATTER Copse / Tawny
- GROUNDDED Copse
- TWIG / CLUSTER Copse / Tawny

Copse Tawny



- GROUNDDED Copse
- TWIG / SCATTER Copse / Tawny
- TWIG / CLUSTER Tawny / Copse
- TWIG / CLUSTER Copse / Tawny
- TWIG / SCATTER Copse / Tawny
- TWIG / CLUSTER Copse / Tawny
- TWIG / SCATTER Copse / Tawny
- TWIG / CLUSTER Copse / Tawny
- GROUNDDED Copse
- TWIG / CLUSTER Copse / Tawny

Leaf / Twig

Create Something Bespoke —  
Fast and Easy Customisation

La création d'un produit  
personnalisé — une  
personnalisation simple  
et rapide

Gestalten Sie Ihre individuelle  
Kreation — schnell und einfach

Creaciones individualizadas —  
Personalización rápida y fácil

Millitron® patterning allows you to create Down to Earth Leaf and Twig combinations in 100s of different colour combinations. The chart below indicates the possible combinations:

La conception de motifs Millitron® vous permet d'associer les designs Leaf et Twig de la collection Down to Earth dans des centaines de combinaisons de couleurs. Le schéma ci-après montre les combinaisons possibles :

Mit der Millitron® Digitaldrucktechnologie stellen Sie Down to Earth Leaf und Twig in hunderten unterschiedlicher Farbkombinationen zusammen. Aus der untenstehenden Abbildung entnehmen Sie die Kombinationsmöglichkeiten:

La tecnología de diseño Millitron® le permitirá crear combinaciones de Down to Earth y Twig en cientos de diferentes combinaciones de colores. La siguiente tabla indica las posibles combinaciones:

	Beech	Beetle	Blackbird	Bluebell	Bracken	Canopy	Copse	Cuckoo	Dormouse	Dragonfly	Fallow	Fog	Foxglove	Froed	Grove	Hare	Hedgehog	Hop	Husk	Morel	Mulberry	Nest	Nuthatch	Oak	Red Squirrel	Samara	Seed	Silver Birch	Sycamore	Tawny	Wild	Yew	
Beech																																	
Beetle																																	
Blackbird																																	
Bluebell																																	
Bracken																																	
Canopy																																	
Copse																																	
Cuckoo																																	
Dormouse																																	
Dragonfly																																	
Fallow																																	
Fog																																	
Foxglove																																	
Froed																																	
Grove																																	
Hare																																	
Hedgehog																																	
Hop																																	
Husk																																	
Morel																																	
Mulberry																																	
Nest																																	
Nuthatch																																	
Oak																																	
Red Squirrel																																	
Samara																																	
Seed																																	
Silver Birch																																	
Sycamore																																	
Tawny																																	
Wild																																	
Yew																																	

Standard / Standard / Standard / Estándar





## PACKED *with* PERFORMANCE

### Take a look at the benefits we've packed into the DOWN TO EARTH collection

#### Luxurious Underfoot Comfort

with our innovative  
cushion backing

#### Excellent Acoustic Performance

provided by our cushion backing  
and high-performance fibre  
Impact Sound 32 dB  
Sound Absorption 0.30 dB

#### Carbon Neutral

all our carpet and LVT is Carbon  
Neutral as part of our M/PACT™  
Programme and offers impressive Green  
credentials from recycled content to  
responsible end of life re-use

#### Supports Well-being

designed with health, happiness and  
productivity in mind, this biophilic  
carpet collection contributes to WELL  
Building certification

#### Appearance Retention and Durability

engineered to look better and last longer  
through our use of premium quality fibre  
and innovative cushion backing

#### TractionBack 2.0 Adhesive Free Installation

available with TractionBack 2.0, a more  
sustainable, healthier and more efficient  
method of carpet installation.



### Découvrez les atouts associés à la collection DOWN TO EARTH

**Un luxueux confort de marche**  
grâce à notre dossier mousse novateur

**Une excellente performance acoustique**  
fournie par notre dossier mousse et  
nos fibres haute performance  
Bruit d'impact 32 dB / Absorption acoustique 0,30 dB

**La neutralité carbone**  
toutes nos moquettes et tous nos produits LVT  
sont neutres en carbone, conformément à notre  
programme M/PACT™, et présentent une valeur  
écologique impressionnante, du contenu recyclé  
à une réutilisation responsable en fin de vie

**Le soutien au bien-être**  
conçue en pensant santé, bonheur et productivité,  
cette collection de moquettes biophiliques  
contribue à la certification de construction WELL

**Conservation de l'aspect et durabilité**  
conçue pour une meilleure esthétique et une  
plus grande durée de vie, grâce au recours à  
des fibres de grande qualité et à un système  
de dossier novateur

**Une pose sans adhésif grâce à TractionBack 2.0**  
proposée avec TractionBack 2.0, un procédé  
de pose de moquette plus soutenable,  
plus sain et plus efficace



### Sehen Sie sich an, mit welchen Vorteilen wir unsere Kollektion DOWN TO EARTH ausgestattet haben

**Luxuriöser Geh- und Stehkomfort**  
durch unseren innovativen Polsterrücken

**Hervorragende Akustikleistung**  
bieten unser Polsterrücken und die  
hochleistungsfähige Faser  
Trittschall 32 dB / Schallabsorption 0.30 dB

**CO<sub>2</sub>-neutral**  
unsere Teppiche und LVT sind Teil unseres  
M/PACT™ Programms und damit CO<sub>2</sub>-neutral.  
Sie bieten beeindruckende Umweltschutzevorteile,  
die vom Recyclinggehalt bis hin zur  
verantwortungsvollen Wiederverwertung am  
Ende des Produktlebenszyklus reichen

**Unterstützt das Wohlbefinden**  
entworfen für Gesundheit, Zufriedenheit und  
Produktivität. So leistet die biophile Teppichkollektion  
ihren Beitrag zur WELL Gebäudezertifizierung

**Erhalt des Erscheinungsbildes und  
Strapazierfähigkeit**  
entwickelt für ein verbessertes Gesamtbild und eine  
längere Nutzungsdauer durch unseren Einsatz von  
Nylonfasern in Premiumqualität und das innovative  
Polsterrückensystem

**TractionBack 2.0 Selbsthaftende Installation**  
erhältlich mit TractionBack 2.0, einer sauberen,  
gesünderen und effizienteren Installationsmethode  
für Teppiche



### Eche un vistazo a los beneficios que hemos incluido en la colección DOWN TO EARTH

**Lujoso confort bajo los pies**  
con nuestra innovadora base almohadillada

**Excelentes cualidades acústicas**  
gracias a nuestra base almohadillada  
y a la fibra de alto rendimiento  
Ruido de impacto 32 dB / Absorción del sonido 0,30 dB

**Carbono neutro**  
todos nuestros productos de moqueta y LVT son  
carbono neutro como parte de nuestro programa  
M/PACT™ y ofrecen increíbles credenciales ecológicas  
gracias, entre otros, a su contenido reciclado y a una  
reutilización responsable al final de su vida útil

**Apoyando el bienestar**  
diseñada con la salud, la felicidad y la productividad  
en mente, esta colección de moqueta biofílica  
contribuye a la certificación de WELL Building

**Retención de la apariencia y durabilidad**  
ha sido diseñada para que su apariencia sea más  
duradera gracias a que usamos fibra de alta calidad  
y al innovador sistema de base almohadillada

**Instalación sin adhesivos TractionBack 2.0**  
disponible con TractionBack 2.0, un método  
de instalación de la moqueta más sostenible,  
más sano y más eficiente





## TECHNICAL INFORMATION



Specification



Visualise Online



Interactive Brochure

## INFORMATIONS TECHNIQUES



Spécification



Visualiser En Ligne



Brochure Interactive

## TECHNISCHE ANGABEN



Datenblatt



Online Visualisieren



Interaktive Broschüre

## INFORMACIÓN TÉCNICA



Especificaciones Técnicas



Visualizar Online



Folleto Interactivo

# M/PACT

CARBON NEUTRAL PROGRAMME™

Our flooring products are carbon neutral everywhere in the world. Today.

Aujourd'hui, nos moquettes, nos produits LVT et nos revêtements pour entrées sont neutres en carbone, partout dans le monde.

Unsere Teppichfliesen, LVT-Bodenbeläge und Schmutzfangsysteme sind jetzt weltweit CO<sub>2</sub>-neutral.

En la actualidad todas nuestras losetas de moqueta, LVT y suelos de entradas son carbono neutro en todo el mundo.



Scan to learn more about our carbon neutral programme  
[www.millikenfloors.com/gb/mpact](http://www.millikenfloors.com/gb/mpact)



Scanner pour plus d'infos sur notre programme de neutralité carbone  
[www.millikenfloors.com/fr/mpact](http://www.millikenfloors.com/fr/mpact)



Scannen und mehr über unser CO<sub>2</sub>-neutrales-Programm erfahren  
[www.millikenfloors.com/de/mpact](http://www.millikenfloors.com/de/mpact)



Escanee aquí para obtener más información sobre nuestro programa carbono neutro  
[www.millikenfloors.com/es/mpact](http://www.millikenfloors.com/es/mpact)

## SERVICE

### 10 Quick Ship 10 Day Service

Colours indicated with this symbol are included in the 10 Day Service programme—up to 1000 square metres per colour, available for despatch within 10 working days of order placement.

Les coloris indiqués par ce symbole sont inclus dans le service d'envoi rapide 10 jours—jusqu'à 1000 m<sup>2</sup> par coloris, prêt à l'envoi sous 10 jours à compter de votre commande.

Die Farben mit diesem Symbol sind Bestandteil des 10-Tage-Services – bis zu 1000 Quadratmeter pro Farbe können innerhalb von 10 Werktagen ab Bestelleingang versendet werden.

Los colores indicados con este símbolo se incluyen en el programa de envío en 10 días—hasta 1.000 m<sup>2</sup> por color—, y están disponibles para ser enviados en 10 días laborables desde que se realice el pedido.

### Basic Service

**Basic Service**  
Colours indicated with this symbol are not included in the Quick Ship programme. Lead times for collections offered on our Basic Service programme will vary and clients are advised to contact Milliken Customer Service with design, colour and quantity requirements for a lead time quotation. 20 square metres minimum order quantity.

**Service de base**  
Les coloris indiqués par ce symbole comportent des délais de livraison variables et ne sont pas inclus dans le service d'envoi rapide. Contactez le service clients en indiquant le design, le coloris et la quantité désirée pour connaître le délai de livraison. Commande minimum : 20 m<sup>2</sup>.

**Standard - Service**  
Die Farben mit diesem Symbol sind kein Bestandteil des Quick-Ship-Services. Lieferzeiten von Kollektionen mit Basic-Service variieren. Wir bitten Sie daher, sich bei Lieferzeitanfragen an den Milliken-Kundenservice zu wenden und dabei Design-, Farb- und Mengenwünsche bereitzuhalten. Mindestbestellmenge: 20 Quadratmeter.

**Servicio básico**  
Los colores indicados con este símbolo no están incluidos en el programa Quick Ship de envío rápido. Los plazos de envío para las distintas colecciones que se ofrecen en el programa de Servicio Básico varían, por lo que se recomienda a los clientes que se pongan en contacto con nuestro departamento de Atención al Cliente indicando el diseño, color y cantidad requeridos para poder recibir una estimación del plazo de entrega. El pedido mínimo es de 20 m<sup>2</sup>.

Quick Ship offer subject to change without notice. See [www.millikenfloors.com](http://www.millikenfloors.com) for latest offer.

L'offre de service d'envoi rapide peut être modifiée sans préavis. Consultez le site [www.millikenfloors.com](http://www.millikenfloors.com) pour découvrir les dernières offres.

Änderungen im Schnellversandangebot vorbehalten. Informieren Sie sich auf [www.millikenfloors.com](http://www.millikenfloors.com) über unser aktuelles Angebot.

Nuestra oferta de Envío Rápido está sujeta a cambios sin previo aviso. Para ver la oferta actualizada, visite [www.millikenfloors.com](http://www.millikenfloors.com).





Our London  
showroom is  
**WELL Platinum**  
Certified

---

**CUSTOMER SERVICE**

SERVICE CLIENT / KUNDENSERVICE-  
CENTER / SERVICIO AL CLIENTE

**UK**

T. +44 (0)1942 612 777  
E. carpetenquiries@milliken.com

**FRANCE**

T. 08 05 54 27 77  
E. demandesmoquettes@milliken.com

**DEUTSCHLAND**

T. 0800 7243794  
E. verkauf@milliken.com

**ESPAÑA**

T. +44 (0)1942 612 777  
E. informaciondemoqueta@milliken.com

**SHOWROOMS****LONDON**

T. +44 (0)20 7336 7290

5 Berry Street,  
Clerkenwell,  
London EC1V 0AA

**PARIS**

T. +33 (0)1 40 98 06 99

40 Rue Des Mathurins,  
75008 Paris

**EUROPEAN HEAD OFFICE**

SIÈGE EUROPÉEN / EUROPÄZENTRALE /  
SEDE CORPORATIVA EUROPA

T. +44 (0)1942 826 073

Beech Hill Plant,  
Gidlow Lane,  
Wigan WN6 8RN

---

**Cover image**

Abstract thorny plant in nature.  
Dave Mantel, iStock

---

**Version 1**

Issued February 2023  
Publiée février 2023  
Ausgabe Februar 2023  
Expedida febrero 2023

[www.millikenfloors.com](http://www.millikenfloors.com)

Milliken™